

KURA HACK

MATERIALS

(2) pcs. 4x8 birch plywood
1/4" or 1/2"

(I used 1/4" - rather flimsy)

(3) pcs. 1"x2" pine,
each cut to 41" long

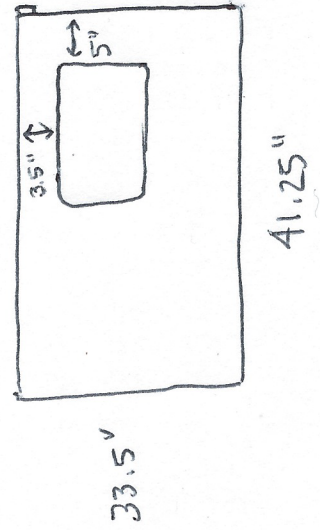
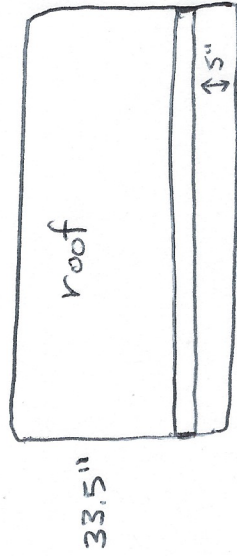
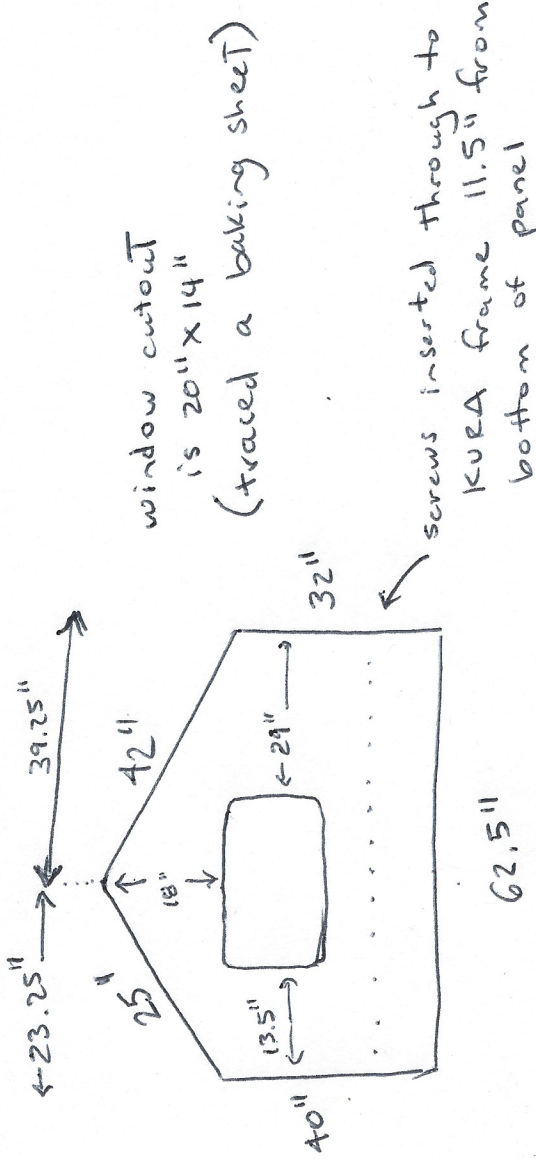
wood screws

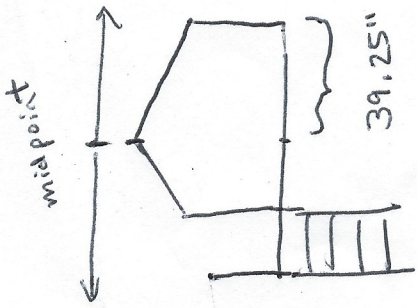
DIRECTIONS

1) Cut out birch plywood pieces using a saw.

2) Cut out the windows -

Remember that for the main piece, the apex of the roof is offset to allow for the ladder.





- This bed was designed for a bed with the ladder built to the left. But you can just flip it to use it for a bed with the ladder to the right.

- So the actual panel is not going to be symmetrical.

2) Once your pieces are cut, screw the supports for the roof in, as noted.

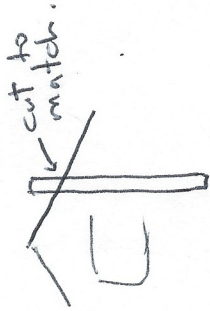
The roof panel gets a support 5" in.

The side panel support is flush with the interior top.

3) Screw on the side and front panels to the bed. Heavy!

4) You need one more support for the roof. The best way to do this is to climb inside the bed and line the support up with front panel. The support should rest on the mattress supports. Mark the roof angle and cut

to fit, noting how many inches you are from the end so you can mount it on the other side and it will line up. Screw it in in several places so it doesn't wobble.



5) Add the roof panel. It doesn't screw in, just lifts off so you can change liners, etc.

6) Decorate! Send me your completed pics! www.vinterymintery.wordpress.com.